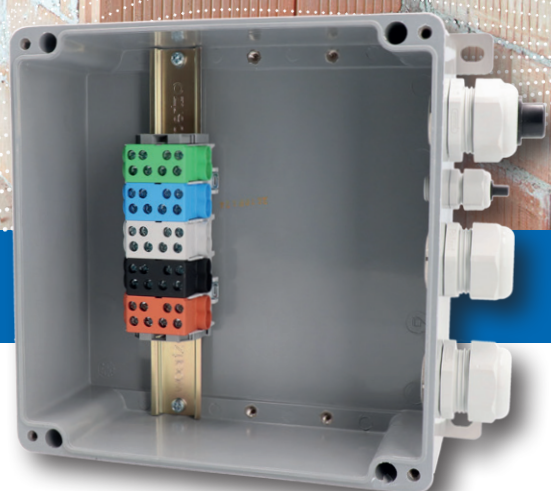




04
CATALOGUE



Junction boxes

Introduction

Introduction	3
--------------	---

Specifications

Specifications	4
----------------	---

Polyester junction and distribution boxes hard rubber

Type 1010	5
Type 1212	5
Type 1616	6
Type 1812	6
Type 2516	7
Type 3020	7
Type 3800	8
Type 3900	8
Type 7800	9
Type 7900	9
Type 7900 with door and lock	9
Accessories	10

Universal connection and branching sleeve

Connection sleeve	11
-------------------	----

Polyester junction and distribution boxes GRP

Type 1616	12
Type 2516	13
Type 3018	14
Type 3018	15

Introduction

GIFAS junction boxes support safe electrical installations: Whether on uneven ground or in confined spaces, in industry or in tunnel construction - our boxes can always be used where electricity has to flow reliably. Possible housing materials include (of course) hard rubber, but also polyester GRP (also E30), stainless steel and polycarbonate. Various mounting accessories guarantee flexible application options.

Typeical applications

Our connectors are primarily made of PA6 and PC/ABS. These technical plastics have the following properties:

- sewage plants chemical industry, galvanizing works
- tunnel construction, tunnels/caverns
- finishing industry
- road and garden construction
- food and luxury food industry
- mines, transport systems

Advantages of hard rubber

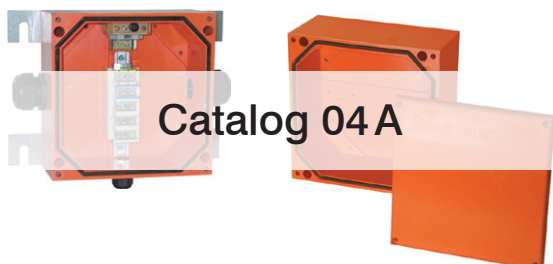
- temperature, weather, UV and ozone resistant
- silicone and halogen free
- good resistance to acids and alkalis
- high electrical insulation capacity
- self-extinguishing and flame retardant
- no condensation
- high vibration, shock and jarring resistance

Other housing materials

- stainless steel V2A/V4A
- polycarbonate
- small polyester casings
- ABS standard
- ATEX executions are available

- ✓ = from stock, offer subject to prior sale
- countless placement variants can be realised
- various accessories, spare and assembly materials available

Fire-proof junction boxes E30 | E60 | E90

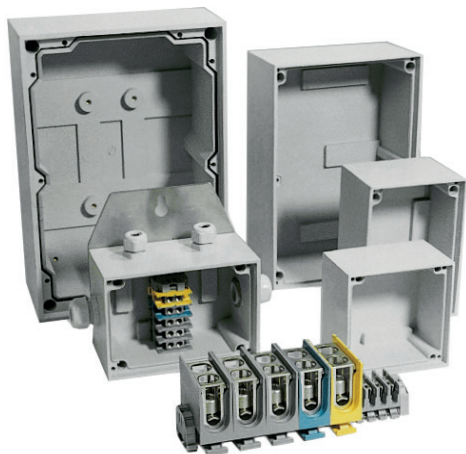


- with preservation of functionality E30 conforming to DIN 4102, part 12
- certified /with test protocol
- to protect life and property in the case of fire
- various dimensions on request
- assembled according to your technical specifications
- individually equipable

Specifications

Our system allows you to remain flexible

The notes given on this page relate to the solid rubber junction boxes. This information applies to fire-proof junction boxes (see catalogue 04A) in a limited way only.



Mounting plate or bracket made from stainless steel
for simple and fast fitting.

V2A/V4A

Sealing groove, sealing part and rubber seal
guarantee a high protection category (IP 65).

IP65

Fitting holes outside the terminal area
Fitting holes outside the terminal area.



Wall thickness from 7 to 15 mm
for use in extreme conditions.



Casing special mixture of butyl rubber
self-extinguishing and halogen-free.



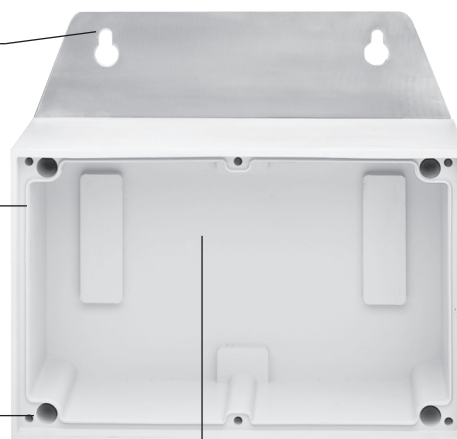
Cover made of polycarbonate

self-extinguishing and halogen-free.
When using especially aggressive cleaning
and operating Material features we recommend using
covers in V2A/V4A versions (on request).



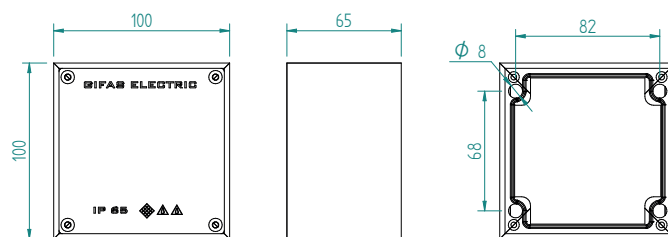
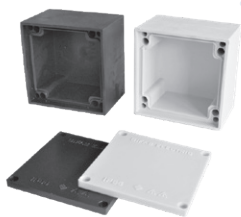
Temperature conductance (condensate formation)

Rubber in vulcanised form is a poor conductor of heat. The thick-walled design of all casings provides very good storage of the given temperature (inside and outside). The dew point (time when humid air condenses) is therefore only transferred very slowly towards the inside. The risk of moisture condensate forming on the inside is virtually excluded.



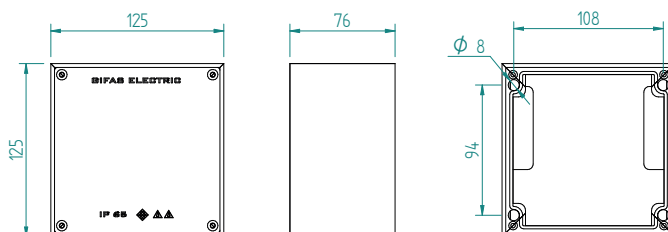
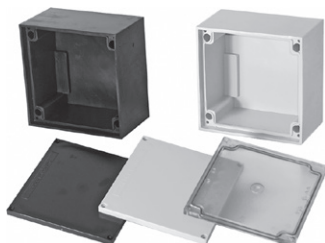
Polyester junction and distribution boxes hard rubber

Type 1010



N° art. grey	N° art. black	Protection category	Input	CableØ max.	Terminal	Remarks
057997	058000	IP65	3×M16 positioned acc. to specification	5×2.5mm ²		4 internal mounting channels
057998	058001	IP65	4×M16 positioned acc. to specification	5×2.5mm ²		4 internal mounting channels
057999	058006	IP65	2×M20 positioned acc. to specification	5×2.5mm ²		4 internal mounting channels
058007 ✓	058008 ✓	IP65	Empty casing			4 internal mounting channels

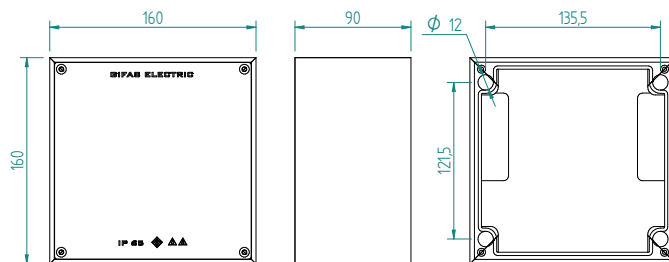
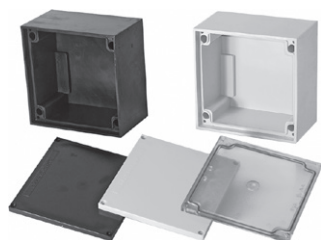
Type 1212



N° art. grey	N° art. black	Protection category	Input	CableØ max.	Terminal	Remarks
070201	070251	IP65	4×M16 positioned acc. to specification	5×6mm ²	3×6mm ²	4 internal mounting channels
070202	070252	IP65	2×M20 positioned acc. to specification	5×6mm ²	5×2.5mm ²	4 internal mounting channels
070203	070253	IP65	3×M20 positioned acc. to specification	5×6mm ²	5×6mm ²	4 internal mounting channels
070204	070254	IP65	4×M20 positioned acc. to specification	5×6mm ²	5×6mm ²	4 internal mounting channels
070205	070255	IP65	2×M20/1×M25 positioned acc. to specification	5×6mm ²	5×6mm ²	4 internal mounting channels
070206	070256	IP65	3×M20/1×M25 positioned acc. to specification	5×6mm ²	5×6mm ²	4 internal mounting channels
070207	070257	IP65	2×M25 positioned acc. to specification	5×6mm ²	5×6mm ²	4 internal mounting channels
056764 ✓	056765 ✓	IP65	Empty casing incl. DIN Rail			4 internal mounting channels

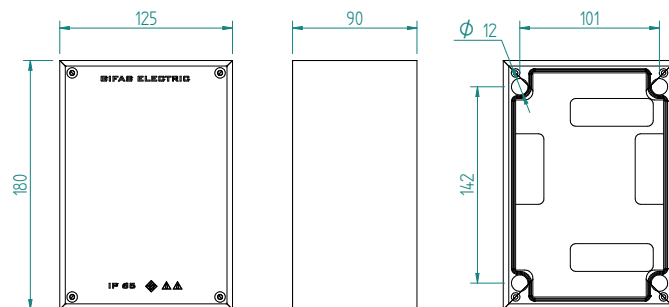
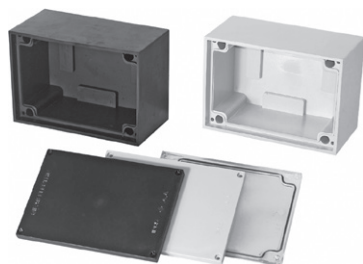
Polyester junction and distribution boxes hard rubber

Type 1616



N° art. grey	N° art. black	Protection category	Input	CableØ max.	Terminal	Remarks
070211	070261	IP65	3×M20 positioned acc. to specification	5×16 mm ²	5×6 mm ²	4 internal mounting channels
070212	070262	IP65	4×M20 positioned acc. to specification	5×16 mm ²	5×6 mm ²	4 internal mounting channels
070213	070263	IP65	6×M20 positioned acc. to specification	5×16 mm ²	5×6 mm ²	4 internal mounting channels
070215	070265	IP65	3×M25 positioned acc. to specification	5×16 mm ²	5×6 mm ²	4 internal mounting channels
070216	070266	IP65	4×M25 positioned acc. to specification	5×16 mm ²	5×10 mm ²	4 internal mounting channels
070217	070267	IP65	2×M32 positioned acc. to specification	5×16 mm ²	5×10 mm ²	4 internal mounting channels
070218	070268	IP65	2×M20 / 2×M32 positioned acc. to specification	5×16 mm ²	5×16 mm ²	4 internal mounting channels
070219	070269	IP65	2×M25 / 2×M32 positioned acc. to specification	5×16 mm ²	5×16 mm ²	4 internal mounting channels
056766 ✓	056767 ✓	IP65	Empty casing incl. DIN Rail			4 internal mounting channels

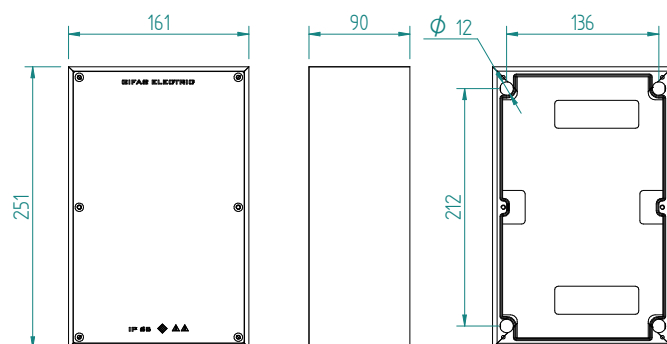
Type 1812



N° art. grey	N° art. black	Protection category	Input	CableØ max.	Terminal	Remarks
070221	070271	IP65	3×M20 positioned acc. to specification	5×16 mm ²	5×6 mm ²	4 internal mounting channels
070222	070272	IP65	4×M20 positioned acc. to specification	5×16 mm ²	5×6 mm ²	4 internal mounting channels
070223	070273	IP65	2×M25 positioned acc. to specification	5×16 mm ²	5×6 mm ²	4 internal mounting channels
070224	070274	IP65	3×M25 positioned acc. to specification	5×16 mm ²	5×6 mm ²	4 internal mounting channels
070225	070275	IP65	2×M32 positioned acc. to specification	5×16 mm ²	5×16 mm ²	4 internal mounting channels
070226	070276	IP65	2×M20 / 2×M25 positioned acc. to specification	5×16 mm ²	5×10 mm ²	4 internal mounting channels
070227	070277	IP65	3×M20 / 2×M25 positioned acc. to specification	5×16 mm ²	5×16 mm ²	4 internal mounting channels
056768 ✓	056769 ✓	IP65	Empty casing incl. DIN Rail			4 internal mounting channels

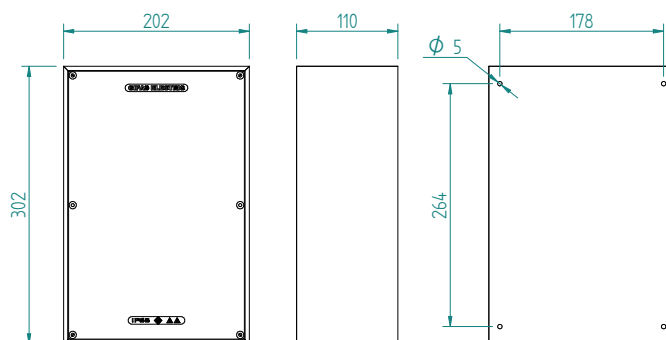
Polyester junction and distribution boxes hard rubber

Type 2516



N° art. grey	N° art. black	Protection category	Input	CableØ max.	Terminal	Remarks
070231	070281	IP65	6×M20 positioned acc. to specification	5×25 mm ²	18×2.5 mm ²	4 internal mounting channels
070233	070283	IP65	3×M25 positioned acc. to specification	5×25 mm ²	5×10 mm ²	4 internal mounting channels
070234	070284	IP65	4×M25 positioned acc. to specification	5×25 mm ²	5×10 mm ²	4 internal mounting channels
070235	070285	IP65	5×M25 positioned acc. to specification	5×25 mm ²	5×16 mm ²	4 internal mounting channels
070237	070287	IP65	3×M32 positioned acc. to specification	5×25 mm ²	5×16 mm ²	4 internal mounting channels
070238	070288	IP65	4×M32 positioned acc. to specification	5×25 mm ²	5×35 mm ²	4 internal mounting channels
070239	070289	IP65	2×M40 positioned acc. to specification	5×25 mm ²	5×35 mm ²	4 internal mounting channels
070240	070290	IP65	3×M40 positioned acc. to specification	5×25 mm ²	5×35 mm ²	4 internal mounting channels
056770 ✓	056771 ✓	IP65	Empty casing incl. DIN Rail			4 internal mounting channels

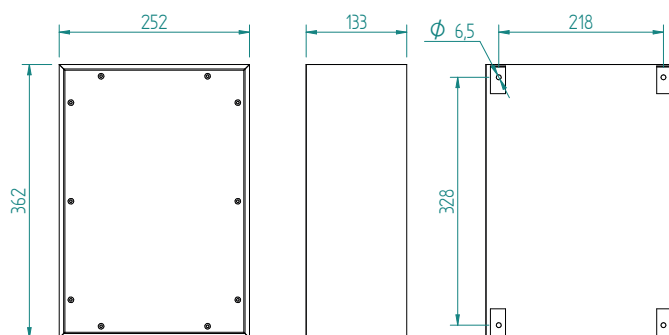
Type 3020



N° art. grey	N° art. black	Protection category	Input	CableØ max.	Terminal	Remarks
051060	051063	IP65	3×M32 positioned acc. to specification	5×35 mm ²	5×35 mm ²	4 internal mounting channels
051061	051065	IP65	2×M50 positioned acc. to specification	5×35 mm ²	5×70 mm ²	4 internal mounting channels
051062	051066	IP65	10×M20 positioned acc. to specification	5×35 mm ²	10×6 mm ²	4 internal mounting channels
051072 ✓	051073 ✓	IP65	Empty casing incl. DIN Rail			4 internal mounting channels

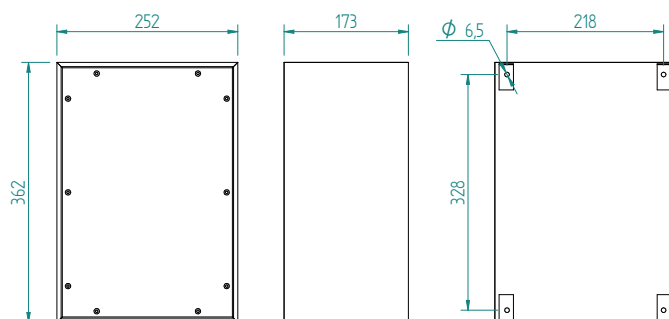
Polyester junction and distribution boxes hard rubber

Type 3800



N° art. grey	N° art. black	Protection category	Input	CableØ max.	Terminal	Remarks
051067	051070	IP65	4×M40 positioned acc. to specification	5×50 mm ²	5×70 mm ²	4 internal mounting channels
051069	051071	IP65	2×M63 positioned acc. to specification	5×50 mm ²	5×120 mm ²	4 internal mounting channels
051074 ✓	051077 ✓	IP65	Empty casing incl. DIN Rail			4 internal mounting channels

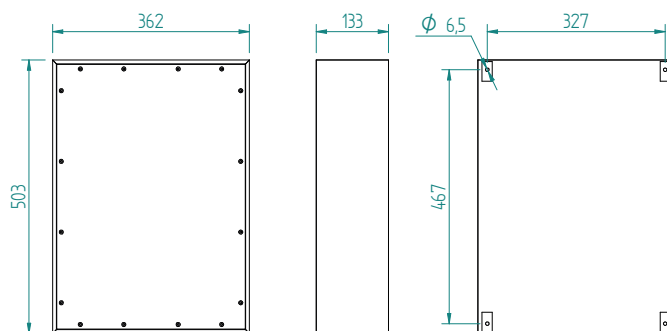
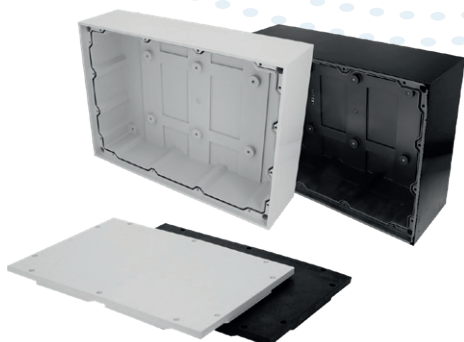
Type 3900



N° art. grey	N° art. black	Protection category	Input	CableØ max.	Remarks
109006	081669	IP65	Empty casing incl. DIN Rail	5×50 mm ²	4 internal mounting channels

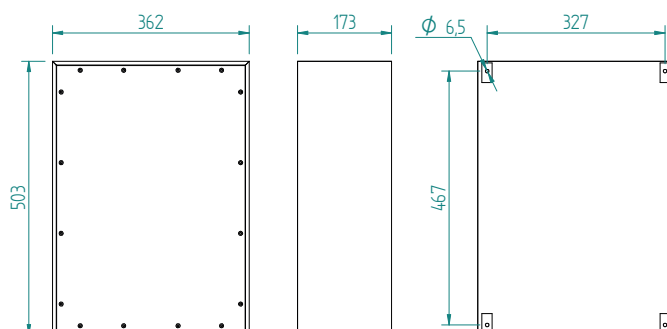
Polyester junction and distribution boxes hard rubber

Type 7800



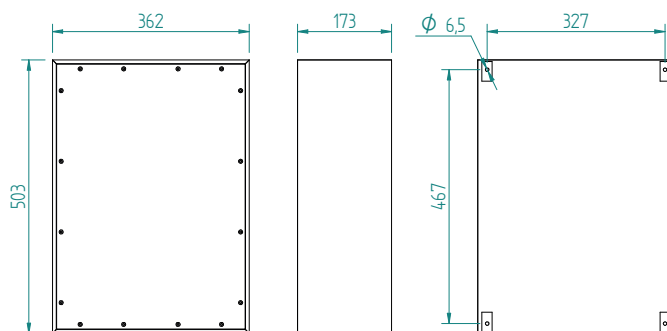
N° art. grey	N° art. black	Protection category	Input	CableØ max.	Terminal	Remarks
051079	051082	IP65	4×M50 positioned acc. to specification	5×95 mm ²	5×120 mm ²	4 internal mounting channels
051080	051083	IP65	1×cable glands special (cable 46 - 56 mm) 4×M50 positioned acc. to specification	5×95 mm ²	5×120 mm ²	4 internal mounting channels
051081	051085	IP65	10×M32 positioned acc. to specification	5×95 mm ²	5×240 mm ²	4 internal mounting channels
051086	051088 ✓	IP65	Empty casing incl. DIN Rail			4 internal mounting channels

Type 7900



N° art. grey	N° art. black	Protection category	Input	CableØ max.	Terminal	Remarks
109007	073740	IP65	Empty casing incl. DIN Rail and mounting plate	5×95 mm ²		4 internal mounting channels

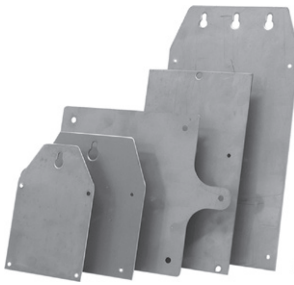
Type 7900 with door and lock



N° art. grey	N° art. black	Protection category	Input	CableØ max.	Terminal	Remarks
109008	108999	IP65	Empty casing incl. DIN Rail, door and mounting plates	5×95 mm ²		4 internal mounting channels

Accessories

Mounting plates



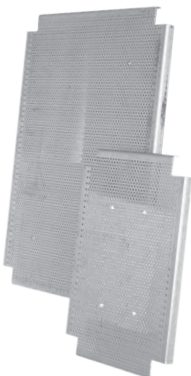
N° art.	for type	Version
058205 ✓	1010	square, rust-free, A2
052787 ✓	1212	square, rust-free, A2
052788 ✓	1616	square, rust-free, A2
052789 ✓	1812	diagonal, rust-free, A2
052785 ✓	1812	high, rust-free A2
052790 ✓	2516	diagonal, rust-free, A2
052792 ✓	2516	high, rust-free A2
049943 ✓	3020	diagonal, rust-free, A2
050917 ✓	3020	high, rust-free A2
040119 ✓	3800/3900	diagonal, rust-free, A2

Mounting brackets



N° art.	for type	Version
178419 ✓	diverse	short, rust-free, V4A
058206 ✓	1010	long/diagonal, rust-free, A2
056089 ✓	1212/1812	long/diagonal, rust-free, A2
056090 ✓	1616/2516	long/diagonal, rust-free, A2
056091 ✓	1812	long/vertical, rust-free, A2
056092 ✓	2516	long/vertical, rust-free, A2
049691 ✓	3020	long/diagonal, rust-free, A2
049689 ✓	3020	long/vertical, rust-free, A2
032555 ✓	3800/3900	long/diagonal, rust-free, A2
032553 ✓	3800/7800	long/diagonal, rust-free, A2

Mounting plates punched






N° art.	for type
011411 ✓	3800/3900
019877 ✓	7800/7900

Universal connection and branching sleeves

Connection sleeve

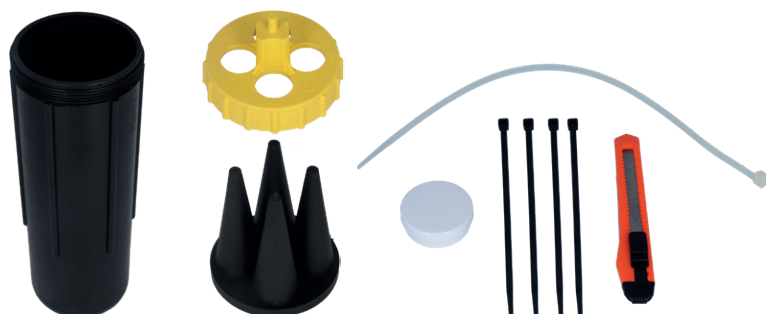
These universal connection and branching sleeves were especially developed to provide simple reliable protection for telecommunication and electrical applications.

They can be installed outdoors, in pits and below ground, can be opened and reused as required and are provided with protection category IP68.

Technical data			
			
N° art.	206290	197983	216551
Housing material	Tensile stress, black	Tensile stress, black	Polypropylen, schwarz
Lid	Tensile stress, yellow	Tensile stress, yellow	Polypropylen, schwarz
Dimensions	Ø 170×72 mm	Ø 280×100 mm	Ø 330×170 mm
Inlets	4×Ø 5-14 mm	4×Ø 7-25 mm	6×Ø 8-26 mm 1×Ø 10-33 mm 1×Ø 10-12 mm
Strain relief	Mechanically via the cable grommet after insertion	Mechanically via the cable grommet after insertion	Mechanically via the cable grommet after insertion
Tensile stress	min. 80 N/mm	min. 80 N/mm	min. 80 N/mm
Temperature range	-30°C to +65°C	-30°C to +65°C	-30°C to +65°C
Test	IP68, IM22	IP68, IM22	IP68, IM22
Electronics	1 kV, ÖVE	1 kV, ÖVE	1 kV, ÖVE
Test number	VAEE 36221	VAEE 36221	VAEE 36221

Scope of delivery

The sleeves basically consist of only three parts: sleeve body, rubber end cap and cover. Cable ties, lubricant and a cutter are enclosed and guarantee problem-free processing of the sleeve without additional tools.



Polyester junction and distribution boxes GRP

Type 1616

Besides our approved hard rubber product range we are able to fulfill highest chemical and mechanical demands, especially for such systems as in tunnels, in civil engineering, and in chemical and petrochemical industry.

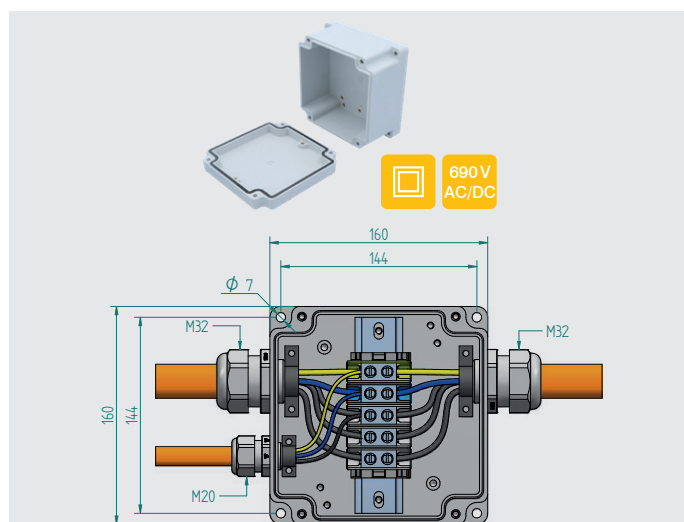
Design approved to IP66/68

Along to Test Report APM Technica: APM_BE_3301389 water and dust in accordance with DIN EN 60529:2014

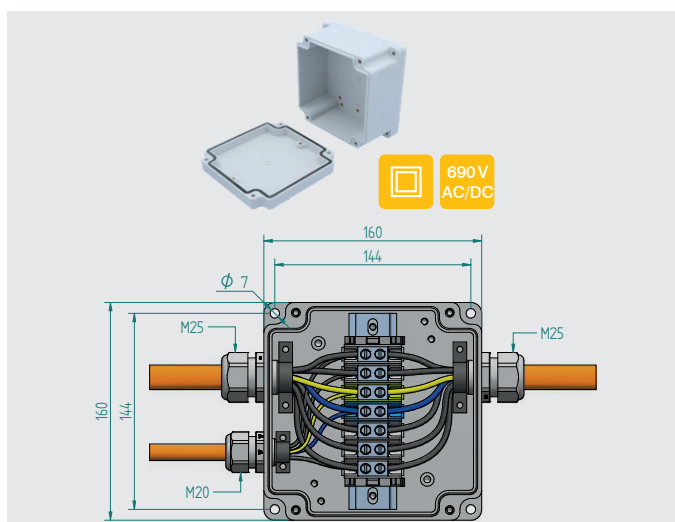
As a result of the higher protection category and the certification according to DIN 4102 Part, the boxes are ideal for adaptive, lane and safety lighting, especially in the national road network and tunnels – individual equipment to customer requirements possible.

Special features

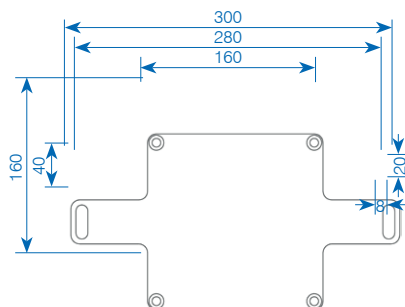
- safety insulated
- impact-resistant
- UV resistant - halogen free
- resistant to aging and temperature
- resistant to oil and acid
- widely resistant to chemicals
- max. equipment: screw terminals up to 35 mm² (type 3018)



N° art.	205672
Housing type	1616 FE05
Housing material	Polyester glass fiber reinforced
Housing colour	grey
Dimensions	160×160×100 mm
Protection category	IP68
Impact resistance	IK07
Input	1×M20, 2×M32
Terminal	5×16 mm ²
Remarks	4 external mounting holes



N° art.	205673
Housing type	1616 FE05
Housing material	Polyester glass fiber reinforced
Housing colour	grey
Dimensions	160×160×100 mm
Protection category	IP68
Impact resistance	IK07
Input	1×M20, 2×M25
Terminal	7×10 mm ²
Remarks	4 external mounting holes

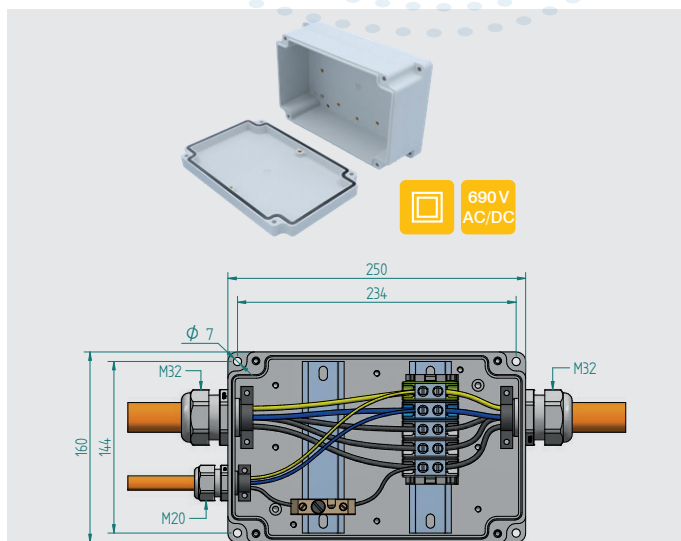


Accessories

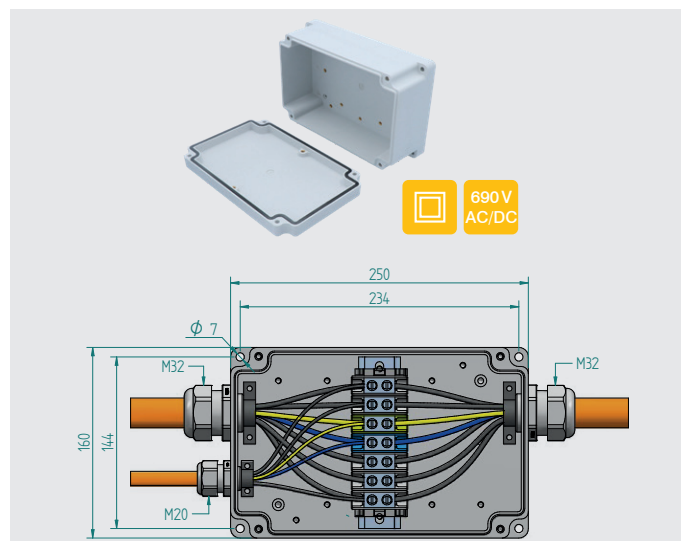
207053 ✓ Mounting plate, crosswise, V4A stainless steel for type 1616

Polyester junction and distribution boxes GRP

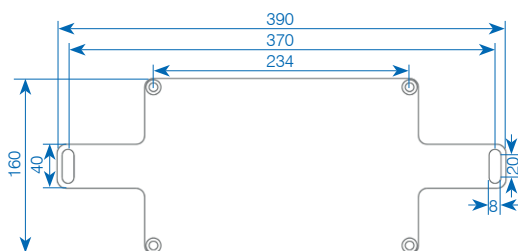
Type 2516



N° art.	205670
Housing type	2516 FE05
Housing material	Polyester glass fiber reinforced
Housing colour	grey
Dimensions	250×160×100 mm
Protection category	IP66
Impact resistance	IK07
Input	1×M20, 2×M32
Terminal	5×16 mm ²
Remarks	4 external mounting holes

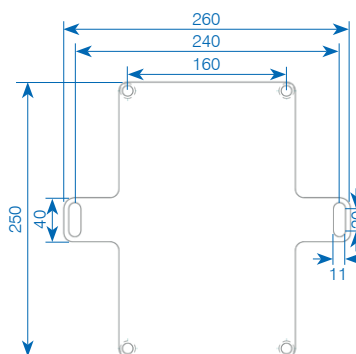


N° art.	205671
Housing type	2516 FE05
Housing material	Polyester glass fiber reinforced
Housing colour	grey
Dimensions	250×160×100 mm
Protection category	IP66
Impact resistance	IK07
Input	1×M20, 2×M32
Terminal	7×16 mm ²
Remarks	4 external mounting holes



Accessories

207052 ✓ Mounting plate, crosswise, V4A stainless steel for type 2516

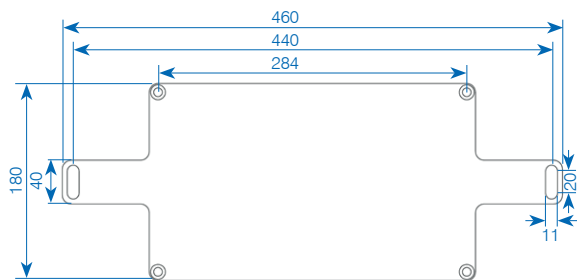
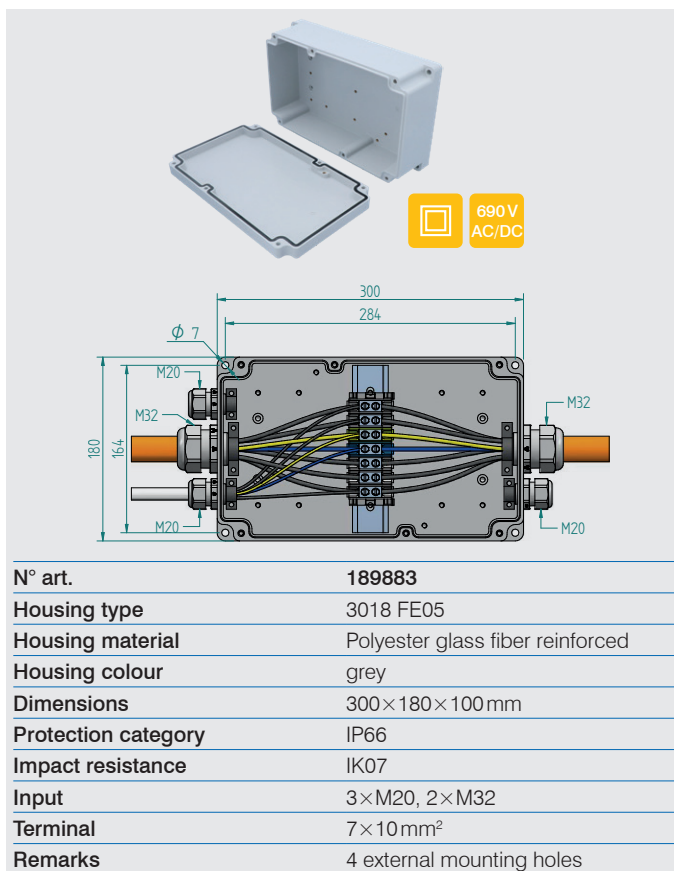
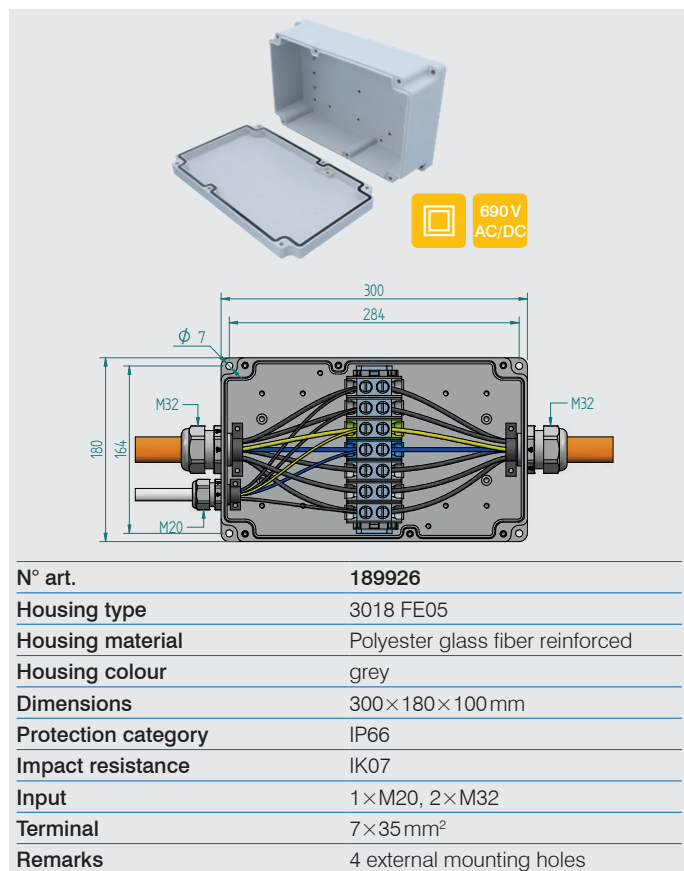


Accessories

205559 Mounting plate, vertical, V4A stainless steel for boxes type 2516

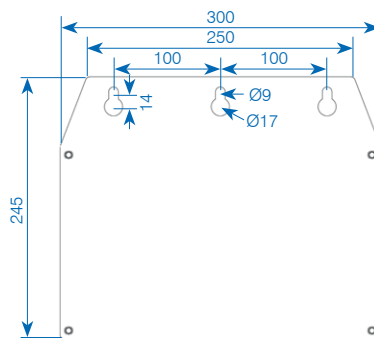
Polyester junction and distribution boxes GRP

Type 3018



Accessories

189869 ✓ Mounting plate, crosswise, V4A stainless steel for type 3018

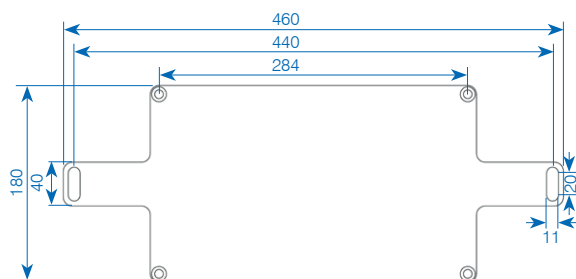
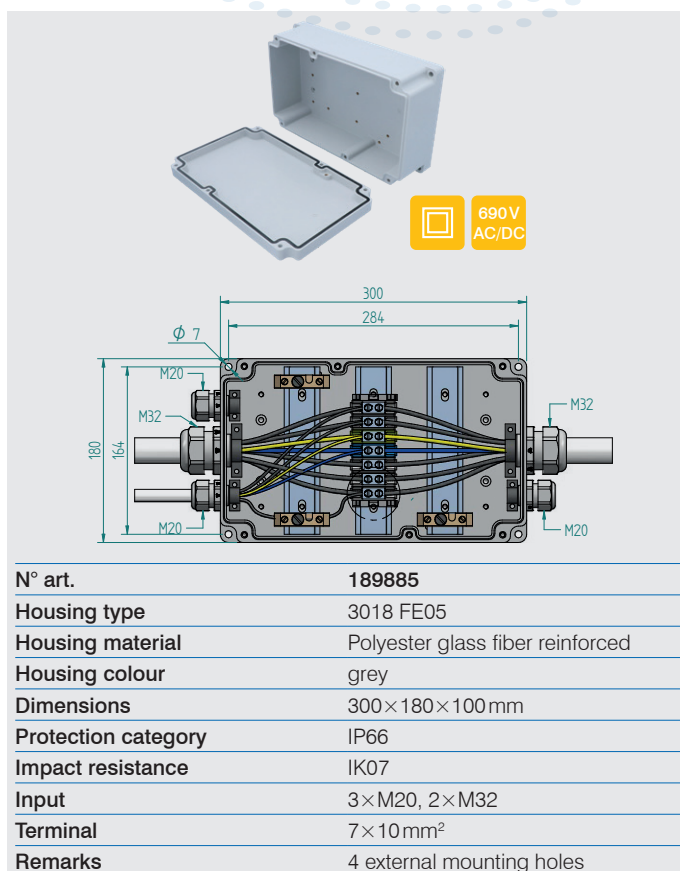


Accessories

206819 Mounting plate, crosswise, V4A stainless steel for type 3018

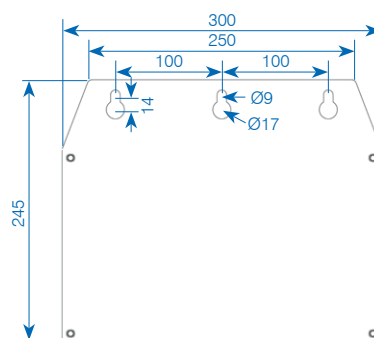
Polyester junction and distribution boxes GRP

Type 3018



Accessories

189869 ✓ Mounting plate, crosswise, V4A stainless steel for type 3018



Accessories

206819 Mounting plate, crosswise, V4A stainless steel for type 3018



**THE
SOLUTION
PARTNER**

GIFAS-ELECTRIC GmbH
Dietrichstrasse 2
CH-9424 Rheineck

+41 71 886 44 44
✉ info@gifas.ch
🌐 www.gifas.ch